

ELECTRIC VEHICLE DC CONTACTORS

MODEL SW822P

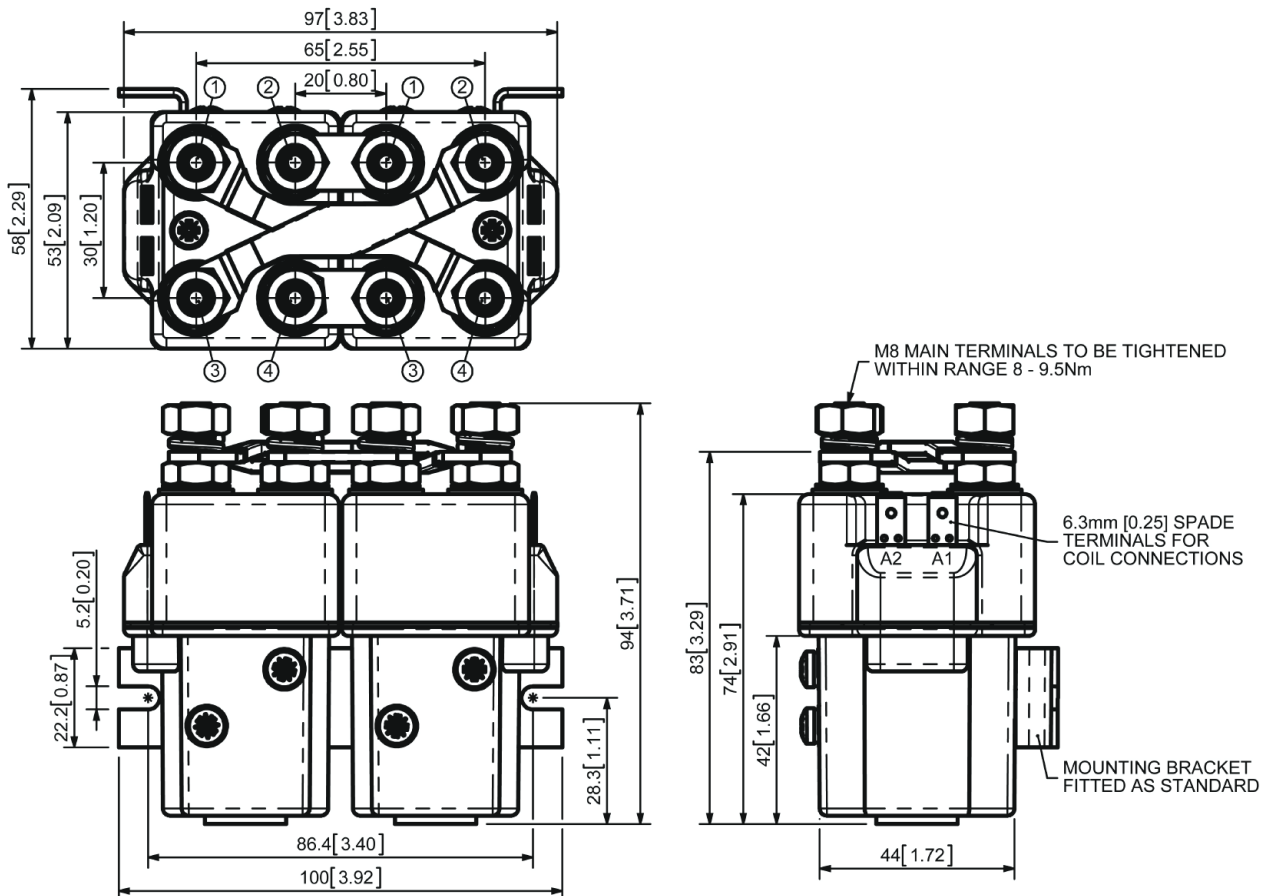


The SW822P has been designed for Motor Reversing applications with direct current loads, particularly motors as used on electric vehicles such as industrial trucks. Developed for both interrupted and uninterrupted loads, the SW822P is suitable for switching Resistive, Capacitive and Inductive loads.

- Interrupted current: opening and closing on load with frequent switching (results in increased contact resistance).
- Uninterrupted current: no or infrequent load switching requirements (maintains a lower contact resistance).

The SW822P features double pole double breaking main contacts with silver alloy tips, which are weld resistant, hard wearing and have excellent conductivity. The SW822P features an enclosed top cover and offers environmental protection to IP66. The SW822P has M8 stud main terminals and 6.3mm spade coil connections. Mounted using supplied brackets, mounting can be horizontal or vertical, when vertical the M8 contact studs should point upwards. If the requirement is for downwards orientation we can adjust the contactor to compensate for this.

DIMENSIONS mm [in]



MODEL SW822P

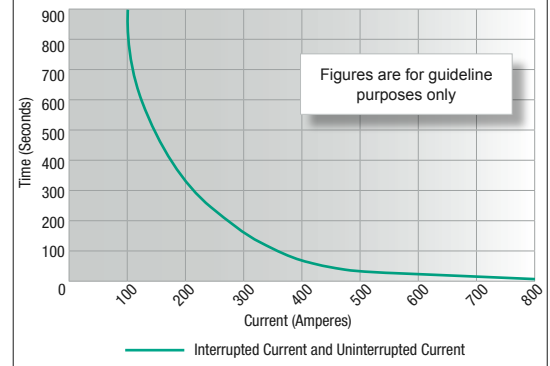
SPECIFICATIONS

Application	Interrupted	Uninterrupted
Thermal Current Rating (I _{th})	100A	
Intermittent Current Rating:		
30% Duty	185A	
40% Duty	160A	
50% Duty	140A	
60% Duty	130A	
70% Duty	120A	
Rated Fault Current Breaking Capacity (I _{cn}) 5ms Time Constant: (in accordance with UL583)		
SW822P	800A at 80V	
Maximum Recommended Contact Voltages (U ₀):		
SW822P	96V D.C.	
Typical Voltage Drop per pole across New Contacts at 100A:	50mV	
Mechanical M.T.B.F	>5 x 10 ⁶	
Coil Voltage Available (U _S) (Rectifier board required for A.C.)	From 6 to 240V D.C.	
Coil Power Dissipation:		
Highly Intermittent Rated Types	20 – 30 Watts	
Intermittently Rated types	15 – 20 Watts	
Prolonged Rated Types	13 – 15 Watts	
Continuously Rated Types	7 – 13 Watts	
Maximum Pull-In Voltage (Coil at 20° C) Guideline:		
Highly Intermittent Rated types (Max 25% Duty Cycle)	60% U _S	
Intermittently Rated types (Max 70% Duty Cycle)	60% U _S	
Prolonged Operation (Max 90% Duty Cycle)	60% U _S	
Continuously Rated Types (100% Duty Cycle)	66% U _S	
Drop-Out Voltage Range	10 – 25% U _S	
Typical Pull-In Time	20ms	
Typical Drop-Out Time (N/O Contacts to Open):		
Without Suppression	5ms	
With Diode Suppression	50ms	
With Diode and Resistor (Subject to resistance value)	8 – 20ms	
Typical Contact Bounce Period	3ms	
Operating Ambient Temperature	-40°C to +60°C	
Guideline Contactor Weight:		
SW822P	960 gms	
Copper busbar	80mm ² [0.124inch ²]	
Cable	Rated suitable for Application	

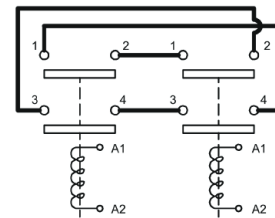
NOTE: Performance data provided should be used as a guide only. Some de-rating or variation from figures may be necessary according to application. Thermal current ratings stated are dependant upon the size of conductor being used.

The SW822 has fast drop out times and relatively slow pull-in times. Motor direction changes can be undertaken without risk of all contacts being closed at the same time. Note, some coil suppression such as diodes substantially increase drop out times and care must be taken to ensure suitable suppression is used (e.g. diode and resistor in series).

SW822P Contactor Performance



Connection Diagram



SW822P Available Options

General		Suffix
Auxiliary Contacts	X	
Auxiliary Contacts – V3	X	
Magnetic Blowouts†	X	
Magnetic Blowouts – High Powered†	X	
Armature Cap	X	
Mounting Brackets	●	
Magnetic Latching† (Not fail safe)	○	M
Closed Contact Housing‡	●	
Environmentally Protected IP66	●	P
EE Type (Steel Shroud)	X	
Contacts		
Large Tips	○	L
Textured Tips	○	T
Silver Plating	X	
Coil		
AC Rectifier Board (Fitted)	X	
Coil Suppression†	○	
Flying Leads	X	
Manual Override Operation	X	
M4 Stud Terminals	○	
M5 Terminal Board	X	
Vacuum Impregnation	○	

Key: Optional ○ Standard ● Not Available X

† Connections become polarity sensitive

‡ Open Housing Available

